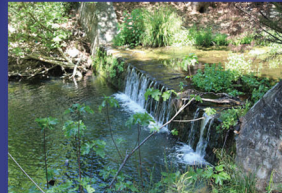




**MUNICIPALITY
OF PILEA - HORTIATIS
THESSALONIKI
GREECE**

Route of Remembrance





MUNICIPALITY OF PILEA – HORTIATIS

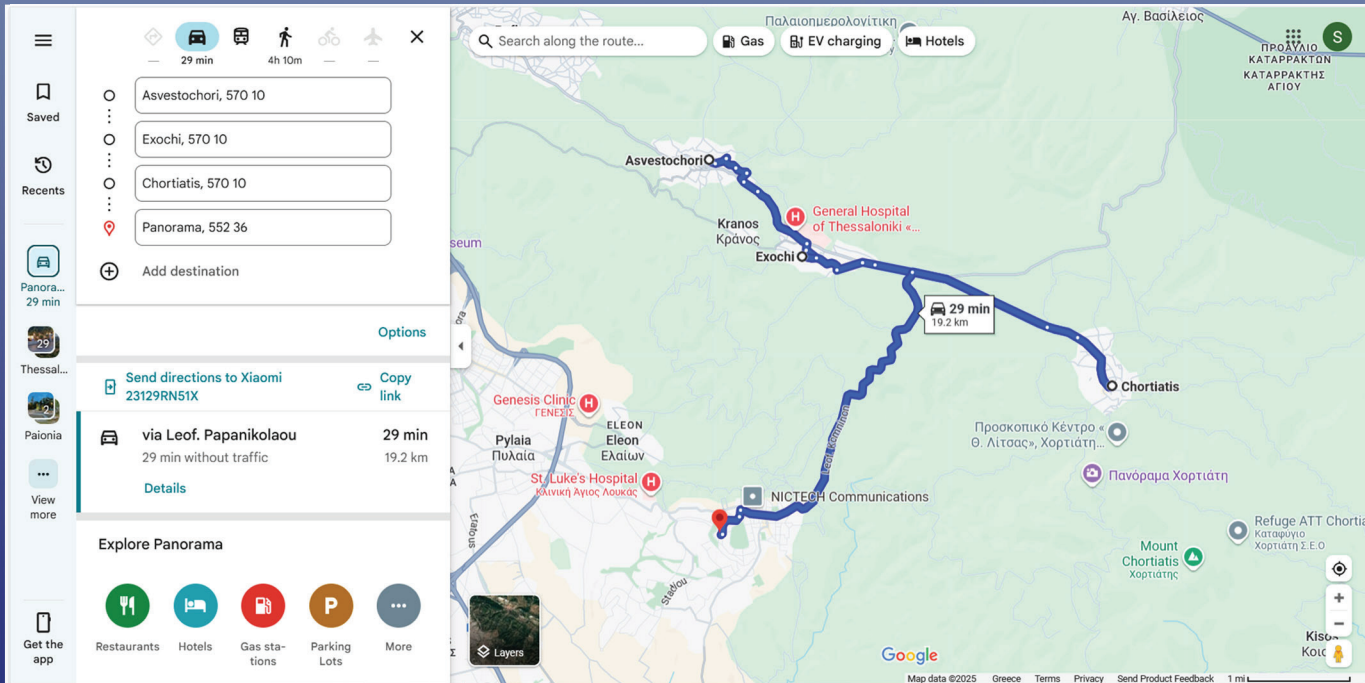


The Municipality of Pilea-Hortiatis is located 18 km northeast of the metropolitan area of Thessaloniki. It extends from Mount Hortiatis to the Thermaic Gulf and includes the settlements: Filyro, Pilea, Panorama, Exohi, Asvestohori and Hortiatis.

The area has been continuously inhabited since prehistoric times. During the 20th century, it was a center for fighters of the Macedonian Struggle and later became a base for the English and French armies during World War I, a place of settlement for refugees, a sanatorium for tuberculosis patients, the headquarters of the resistance forces and a place of massacre in World War II.

The monuments of the Municipality of Pilea-Hortiatis reflect the significance of the area in the history of Thessaloniki, Central Macedonia, and Greece. The Historical Memory of the Municipality of Pilea-Hortiatis unfolds through a remembrance route, with suggested places to visit.

ROUTE OF REMEMBRANCE – MUNICIPALITY OF PILEA-HORTIATIS: Asvestochori, Exochi, Hortiatis, Panorama



Navigation app interface showing a route from Asvestochori to Panorama. The route is highlighted in blue and passes through Exochi and Hortiatis. The app interface includes a sidebar with saved destinations, a search bar, and various navigation options like gas stations and hotels.

Saved Destinations:

- Asvestochori, 570 10
- Exochi, 570 10
- Chortiatis, 570 10
- Panorama, 552 36

Route Details:

- via Leof. Papanikolaou
- 29 min
- 29 min without traffic
- 19.2 km

Explore Panorama:

- Restaurants
- Hotels
- Gas stations
- Parking Lots
- More

Map Labels:

- Asvestochori
- Kranos Κράνος
- Exochi
- Chortiatis
- Panorama Χορτιάτης
- Mount Chortiatis Χορτιάτης
- Refuge ATT Chortiatis Καταφύγιο Χορτιάτης Σ.Ε.Ο
- General Hospital of Thessaloniki «...
- Genesis Clinic ΓΕΝΕΣΙΣ
- St. Luke's Hospital Κλινική Αγίου Λουκάς
- NICTECH Communications
- Προσκοπικό Κέντρο «Θ. Λίτσας», Χορτιάτη...
- Πανόραμα Χορτιάτης
- Πύλαια Πυλαία
- ELEON Eleon Ελαιών
- Αγ. Βασίλειος
- ΠΡΟΛΑΪΟ ΚΑΤΑΡΡΑΚΤΩΝ ΚΑΤΑΡΡΑΚΤΗΣ ΑΓΙΟΥ

Map data ©2025 Greece Terms Privacy Send Product Feedback 1 mi



Point 1: Asvestohori Settlement (1 stop)


The settlement was named after the mining and exploitation of lime, which was the main activity of the inhabitants from the 17th to the 20th century. Asvestohori is associated with all liberation and social struggles, throughout its history.

The Holy Church of St. George of Asvestohori is a historical landmark of the settlement. It was built in 1867 on top of an earlier church. The 18th-century iconostasis and the pew of Consul Lambros Koromilas, commander of the organizations of the Macedonian Struggle, are preserved. In the churchyard, there is a monument dedicated to the fallen of 1940-1941.

Google maps:

Ekklesia Agios Georgios
(J2RC+5W Asvestochori)

Visiting hours: 24 hours
(outside), morning hours
(inside the church)

 **Duration of visit:**
20' (outside and
inside the church)





Point 2: Commonwealth War Cemetery in Exohi (1 stop)

After the formation of the Macedonian Front in 1916, the British and French forces camped at the area of Hortiatis. Towards the end of World War I, the British Health Service established the hospital and the convalescent homes (recovery centers) of the Entente Allied forces, at this site, due to the area's healthy climate.




Near the hospital, the British Health Service founded military cemeteries.

The Commonwealth Military Cemetery of Exohi-Hortiatis (Kirechkoi-Hortakoi) commemorates 588 British soldiers of the WWI – most of them victims of the 1918 Spanish Flu, 58 Bulgarian war prisoners of the WWI, and 17 British fallen soldiers, during the Second World War.



Google maps: Allied Cemetery (J2GX+4X Exochi)

Visiting hours: From sunrise to sunset (open air)

 **Distance from previous point / est. arrival time / visit duration:**

3,9 km / 6' / 20'





Point 3: Roman Aqueduct of Hortiatis (1 stop)

The Roman Aqueduct of Hortiatis dates back to the 1st century BC and is the only surviving monument of its kind, in Central Macedonia. Measuring 223 m in length and 20 m at its maximum height, the aqueduct supplied Thessaloniki with water, from the springs of Hortiatis, until 1975.




On September 2, 1944, a group of resistance fighters ambushed the vehicles of the Water Company on the way to the aqueduct. During the clash, two occupants were killed. The incident became the pretext for the Hortiatis Holocaust.



Google maps: Roman Aqueduct
BUS STOP (J39Q+5H Chortiatis)

Visiting hours: 24 hours
(open air)

 **Distance from previous
point / est. arrival time /
visit duration:**
3,6 km / 4' / 20'





Point 4: Hortiatis Settlement – Remembrance Walk (6 stops)

Mount Hortiatis has been known since antiquity under the name Kissos. The settlement of Hortiatis was first mentioned in the 11th century. The first archaeological findings were brought to light, by a team of archaeologists of the Allied forces, who camped in the area, during World War I.




During World War II, Hortiatis became headquarters of the resistance operations and a base for the escape network of the allies. On September 2, 1944, the Nazis burned the village and executed 149 residents. In 1998, Hortiatis was designated a “Martyred Village” and today it is the historical seat of the Municipality of Pilea-Hortiatis.



Google maps: Chortiatis Municipal Community (J452+4X Chortiatis). Park and visit the next 6 stops on foot.

Visiting hours: 24 hours (open air)

 **Distance from previous point / est. arrival time / visit duration:**

2 km / 4' / 2 hours





Point 4. Stop 1. Chapel of Agia Paraskevi Hortiatis

The chapel of Agia Paraskevi is in a lush forest with running water. A water supply system (qanat) was constructed here, several centuries ago, to provide an alternative source of water supply, apart from the Roman Aqueduct. This qanat was the largest one in Greece and operates until today.

Google maps: Chapel of Agia Paraskevi (J454+99 Chortiatis)



Distance from previous point: 350 m.



Point 4. Stop 2. Holy Church of Agios Georgios Hortiatis

The Church of St. George was erected in 1837 and is designated as historical monument. It was built on the remains of an earlier church with materials that came from the Byzantine Monastery of Hortaitissa. The bust of Demetrios Tomaras, who got martyred with his family on September 2 1944, lies in the courtyard.

Google maps: Holy Church of Saint George (J453+86 Chortiatis)



Distance from previous point: 280 m.



Point 4. Stop 3.

Byzantine Church of Metamorphosis Sotiros Hortiatis

The recently restored Church of the Transfiguration of the Savior (Metamorphosis tou Sotiros) is located close to the Church of St. George.

It dates from the 12th century and was built on the grounds of the Holy Monastery of Hortaitissa, which had been operating since the 10th century. Impressive frescoes have been restored and preserved inside the church. Next to the church stands a renovated, two-storey Macedonian residence, which operates as a small museum.

Google maps: Holy Church of the Transfiguration of the Saviour (12th c.) (J453+F2 Chortiatis)



Distance from previous point: 61 m.



Point 4. Stop 4. House of Daboudis Memorial

The Daboudis House is one of the two sites of sacrifice during the Hortiatis Holocaust. On September 2, 1944, the Nazis led civilian residents at the Daboudis family home, locked them up, and burned them alive. Inside the historic house, the bones of the martyrs are kept. The names of those executed are commemorated outside.

Google maps: House of Daboudis Memorial (J452+2H Chortiatis)



Distance from previous point: 240 m.




Point 4. Stop 5. Holocaust Memorial of Hortiatis

The Holocaust of Hortiatis refers to the massacre of 149 non-combatant residents by the Nazis on September 2, 1944.

The Holocaust Memorial is engraved with the names and ages of those murdered, while the mosaic depicts the events. The sculpture was erected on September 2, 1960.

It was created by the engraver Mrs Geti Kremmidas, who used marbles from the historic Monastery Hortaitissa for its construction.

Google maps: Martiron 2as Septemvri 35,
Chortiatis 570 10 (J452+67 Chortiatis)

 **Distance from previous point:** 99 m.



Point 4. Stop 6. Gouramanis Bakery Memorial

On September 2, 1944, the Nazis attacked the village of Hortiatis and began to execute everyone they found on the way. The rest of the residents were led to the Daboudis House and the Gouramanis Bakery, where they were burned alive.

Those, who tried to escape, were killed by the machine guns that the executors had put at the entrance of each building. A chapel and a memorial plaque were put on the spot of the massacre.

Google maps: Gouramanis Bakery Memorial (J35X+4W Chortiatis)



Distance from previous point: 66 m.



Point 5: Platanakia Natural Park at Panorama (1 stop)

Platanakia is a natural forest with dense vegetation. The stream that runs through the forest was connected to the Roman Aqueduct, from where the water was channeled through eight watermills and hydraulic structures. It was reforested during the interwar period and constitutes the natural park of the settlement of Panorama.



Google maps:

Πλατανάκια Natura Cafe –
Restaurant (H3V3+H9 Panorama)

Visiting hours:

24 hours (open-air park)



Distance from previ-
ous point /

est. arrival time / visit duration:

9,7 km / 14' / 1 hour

(walk in the park)



**END OF ROUTE OF REMEMBRANCE
MUNICIPALITY OF PILEA-HORTIATIS**

INFORMATION FOR THE ROUTE OF REMEMBRANCE – MUNICIPALITY OF PILEA-HORTIATIS:

- The points of the route are accessible by car and on foot. The route includes 5 suggested points of interest with 10 stops in total.
- Points 1 & 4 are located within settlements that have shops, pharmacies, cafés and restaurants.
- Points 2 & 3 are outdoor attractions and do not provide facilities for the visitors.
- At Point 5, there is a café-restaurant.
- This Route includes the settlements of Asvestohori, Exohi, Hortiatis and Panorama.
- The route can be followed vice versa depending on the starting point.

MUNICIPALITY OF PILEA-HORTIATIS

Info: <https://pilea-hortiatis.gr/>



MUNICIPALITY
OF PILEA – HORTIATIS

GREECE

Member of Liberation Route Europe Foundation



Liberation
Route
Europe

<https://www.liberationroute.com/>

“War Memorial Tourism Campaign” PASS PARTOUT –
Tourism Marketing
Copyright 2025-2026